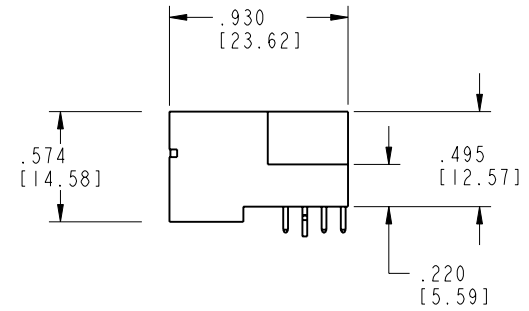
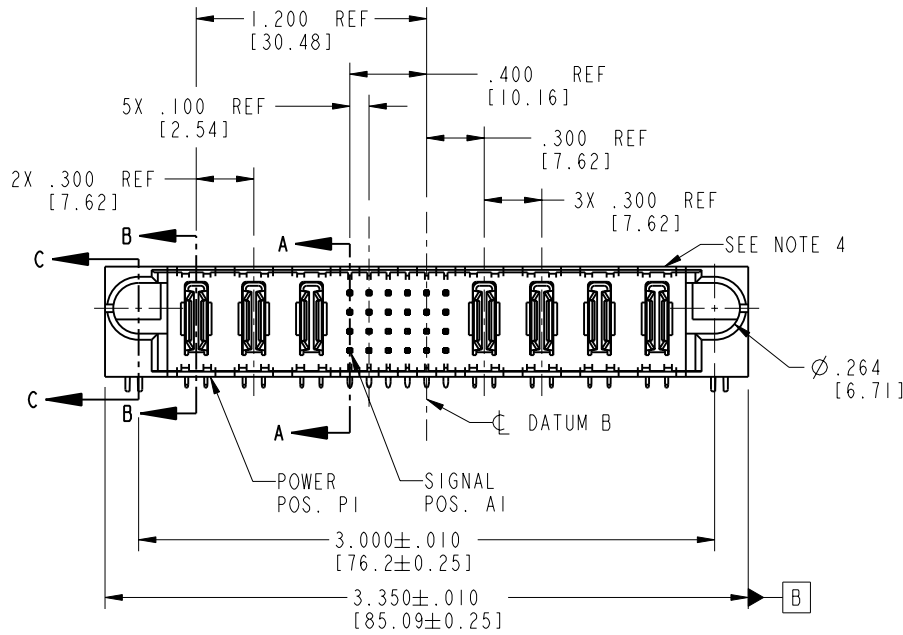
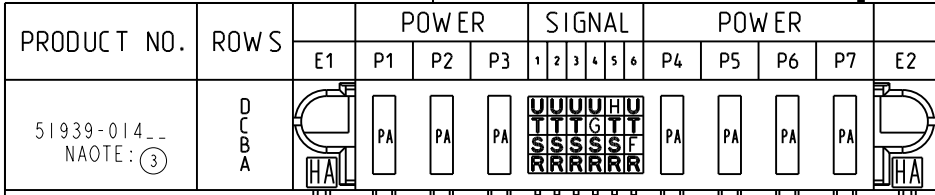


Tous droits strictement réservés. Reproduction ou communication o des liens interdite sous quelque forme que ce soit sans autorisation écrite du propriétaire. Propriété de c FCI. Droits de reproduction FCI.

All rights strictly reserved. Reproduction or issue to third parties in any form whenever is not permitted without written authority from the proprietor. Property of FCI. Copyright FCI.



CODE	DIM "M" MATING LENGTH	CONTACT TYPE
F	.220 [5.59]	SIGNAL
G	.220 [5.59]	SIGNAL
H	.220 [5.59]	SIGNAL
R	.270 [6.86]	SIGNAL
S	.270 [6.86]	SIGNAL
T	.270 [6.86]	SIGNAL
U	.270 [6.86]	SIGNAL
PA	N/A [N/A]	POWER
HA	N/A [N/A]	HOLD-DOWN

mat'l code SEE NOTE 2				tolerances unless otherwise specified		CUSTOMER		 www.fciconnect.com	
ltr	ecn no.	dr	date	linear	.XX±.01/0.X±0.3	COPY			
A	V20788	JWS	04-23-02		.XXX±.005/0.XX±0.13	projection			
B	V21572	CGD	10/02/02		.XXX±.0020/0.XXX±0.051	INCH/MM			
C	V03-0670	MEM	6/12/03	angles	0°±2°	scale			
D	DG05-0338	SJ	09/19/05	dr	J. SHAFFER 04-23-02	1:1			
E	DG06-0008	JMG	01/07/06	enrg	M. MOSTOLLER 04-23-02	product family PwrBlade code 213			
				chr	M. MOSTOLLER 04-23-02	size dwg no			
				appd	M. MOSTOLLER 04-23-02	A 51939-014			
sheet index		revision sheet		E	E	E	E	sheet 1 of 4	
		1 2		3	4				

cage code 22526

Pro/E

PDM: Rev:E

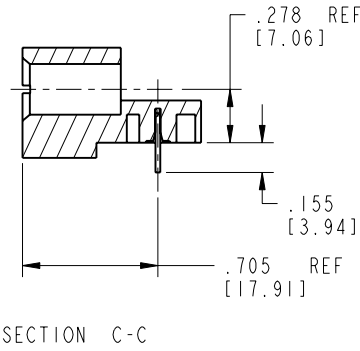
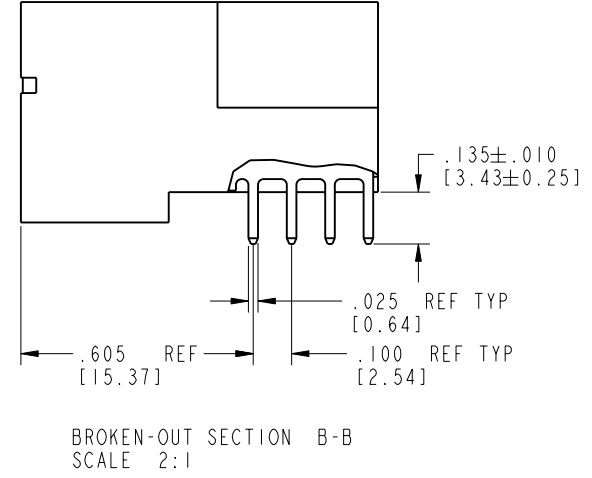
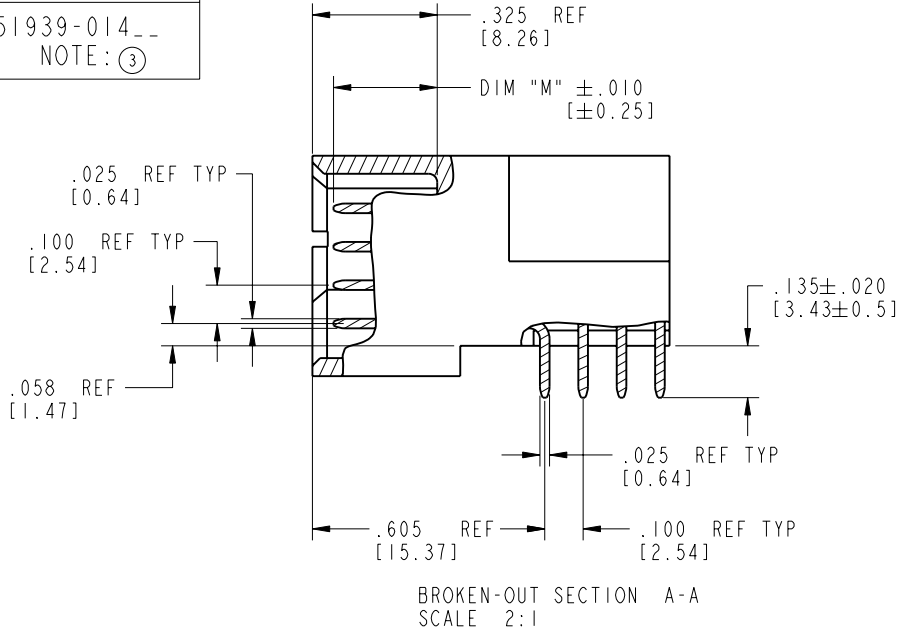
STATUS: Released

Printed: Aug 14, 2007

Tous droits strictement réservés. Reproduction ou communication o des liens interdité sous quelque forme que ce soit sans autorisation écrite du propriétaire. Propriété de c FCI. Droits de reproduction FCI.

All rights strictly reserved. Reproduction or issue to third parties in any form, whatever is not permitted without written authority from the proprietor. Property of FCI. Copyright FCI.

PRODUCT NUMBER  
51939-014\_\_  
NOTE: (3)



mat'l code SEE NOTE 2				tolerances unless otherwise specified		CUSTOMER		 www.fciconnect.com	
lfr	ecn no.	dr	date	linear	.XX±.01/0.X±0.3	COPY			
E				linear	.XXX±.005/0.XX±0.13	projection		 title 3P + 24S + 4P RIGHT ANGLE SOLDER HEADER	
				angles	.XXX±.0020/0.XXX±0.051	 INCH/MM			
				dr	J. SHAFFER 04-23-02	scale		product family PwrBlade	code 213
				engr	M. MOSTOLLER 04-23-02	1:1		size	sheet 2 of 4
				chr	M. MOSTOLLER 04-23-02			dwg no	
				appd	M. MOSTOLLER 04-23-02			A	51939-014
sheet index	revision sheet								

Pro/E

cage code 22526

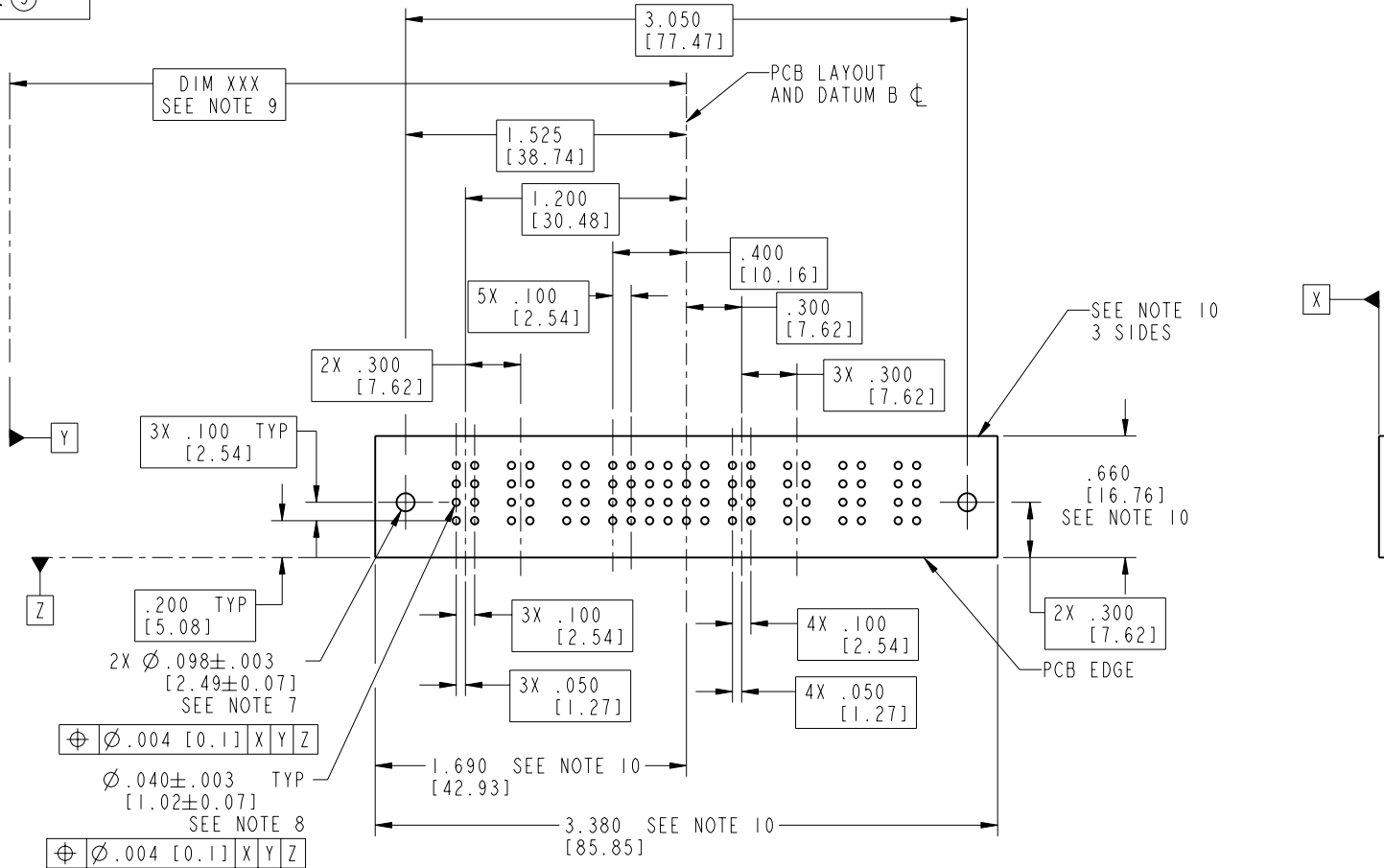
Tous droits strictement réservés. Reproduction ou communication o des liens interdite sous quelque forme que ce soit sans autorisation écrite du propriétaire. Propriété de c FCI. Droits de reproduction FCI.

All rights strictly reserved. Reproduction or issue to third parties in any form, whenever is not permitted without written authority from the proprietor. Property of FCI. Copyright FCI.



PRODUCT NUMBER

51939-014\_\_  
NOTE: ③



RECOMMENDED PCB LAYOUT

mat'l code				SEE NOTE 2		tolerances unless otherwise specified		CUSTOMER		 www.fciconnect.com	
lfr	ecn no.	dr	date	linear	.XX±.01/0.X±0.3	projection		COPY		title	
E				angles	.XXX±.005/0.XX±0.13			A		3P + 24S + 4P	
				dr	.XXX±.0020/0.XXX±0.051			INCH/MM		RIGHT ANGLE SOLDER HEADER	
				enr	0° ± 2°	J. SHAFFER 04-23-02		product family		PwrBlade	
				chr		M. MOSTOLLER 04-23-02		size		code	
				appd		M. MOSTOLLER 04-23-02		A		213	
sheet index		revision sheet		scale		1:1		dwg no		sheet	
								51939-014		3 of 4	

cage code 22526

Tous droits strictement réservés. Reproduction ou communication o des liers interdite sous quelque forme que ce soit sans autorisation écrite du propriétaire. Propriete de c FCI. Droits de reproduction FCI.



All rights strictly reserved. Reproduction or issue to third parties in any form, whatever is not permitted without written authority from the proprietor. Property of FCI. Copyright FCI.

1 | 2

3 |

4

PRODUCT NUMBER

51939-014\_\_  
NOTE: ③

NOTES:

1. DIMENSIONS AND TOLERANCES ARE IN ACCORDANCE WITH ASME Y14.5M, 1994 UNLESS OTHERWISE SPECIFIED.

CONNECTOR NOTES:

- 2. HOUSING MATERIAL: UL 94 V-0 GLASS FILLED HIGH-TEMP THERMOPLASTIC  
POWER CONTACT MATERIAL: COPPER ALLOY  
SIGNAL PIN MATERIAL: COPPER ALLOY
- 3. 51939-014;51939-014LF;51939-014GLF PLATING SPEC. SEE PRINT:10064183
- 4. MANUFACTURER'S NAME, P/N, AND DATE CODE TO APPEAR ON THIS SURFACE.
- 5. PRODUCT SPECIFICATION GS-12-149.  
APPLICATION SPECIFICATION BUS-20-067.

PCB NOTES:

- 6. ALL HOLE DIAMETERS ARE FINISHED HOLE SIZE.
- 7. MOUNTING HOLES, WHERE APPLICABLE, ARE UNPLATED.
- 8.  $\varnothing .0453 \pm 0.0010$  [1.151  $\pm$  0.025] DRILLED HOLES PLATED WITH 0.0003 [0.008] MIN SnPb OVER .001 [0.03] TO .003 [0.08] Cu PLATING TO ACHIEVE  $\varnothing .040 \pm .003$  [1.02  $\pm$  .07] HOLE.
- 9. "DIM XXX" TO BE DETERMINED BY THE CUSTOMER.
- 10. CONNECTOR KEEP-OUT ZONE.

mat'l code		SEE NOTE 2		tolerances unless otherwise specified		CUSTOMER		 www.fciconnect.com	
lfr	ecn no.	dr	date	linear	.XX±.01/0.X±0.3	COPY			
E				linear	.XXX±.005/0.XX±0.13	projection		 title 3P + 24S + 4P RIGHT ANGLE SOLDER HEADER	
				angles	.XXX±.0020/0.XXX±0.051	 INCH/MM			
				dr	J. SHAFFER 04-23-02	scale		product family PwrBlade code 213 size dwg no A 51939-014 sheet 4 of 4	
				enrg	M. MOSTOLLER 04-23-02	1:1			
				chr	M. MOSTOLLER 04-23-02				
				appd	M. MOSTOLLER 04-23-02				
sheet index	revision sheet								

1 | 2

Pro/E

3 |

cage code 22526

4